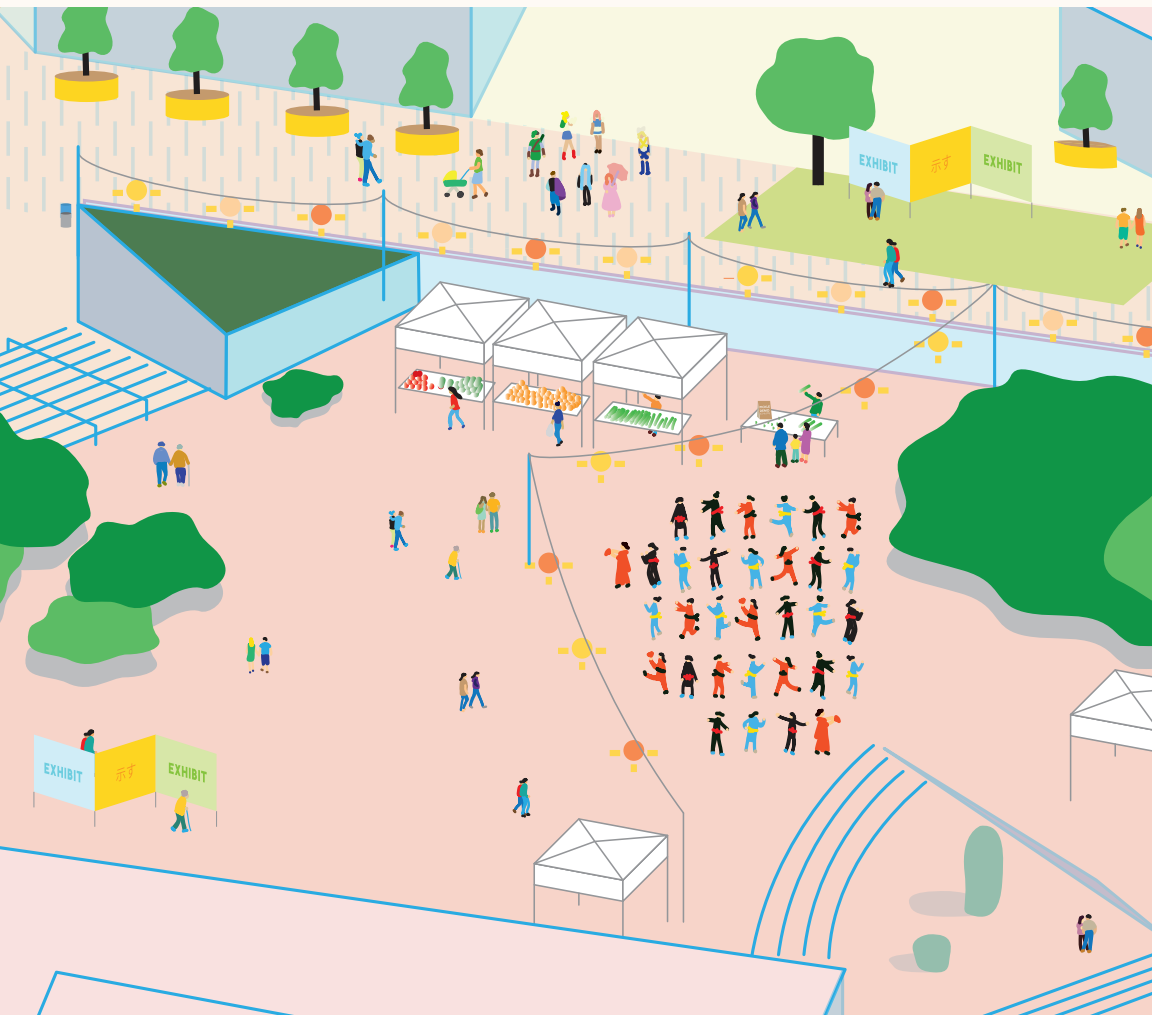


SUSTAINABLE LITTLE TOKYO
REDUCE. REUSE. RECYCLE. RESPECT.



Sustainable Little Tokyo (SLT2020) is a community-driven initiative to provide a range of **immediate improvements** and **short-term actions** that strengthen and support the cultural, economic, and environmental development of the historic neighborhood by 2020.



We need to sustain Little Tokyo because



History

Little Tokyo is over 130 years old, the second oldest neighborhood in Los Angeles, and one of three remaining historic Japantowns in the United States.

Photo by Chikashi Tanka, circa 1910



Culture

Little Tokyo is one of two designated California Cultural Districts in the city of Los Angeles and has more than 50 traditional and contemporary cultural and spiritual groups, organizations, and institutions that range from informal gardening groups to 100-year-old Buddhist temples.



Fighting to Grow

First Street North, the Mangrove Site, and the Metro Regional Connector station site are city-owned pieces of land that are a vital part of Little Tokyo. Little Tokyo is urging the city to support the SLT 2013 vision and have the community determine the development of these parcels.

Photo by Mike Murasa



Legacy Businesses Under Threat

Long-time, family-run, and multigenerational small businesses that are integral to Little Tokyo's culture and identity are now struggling with rising rents and inconsistent patronage.



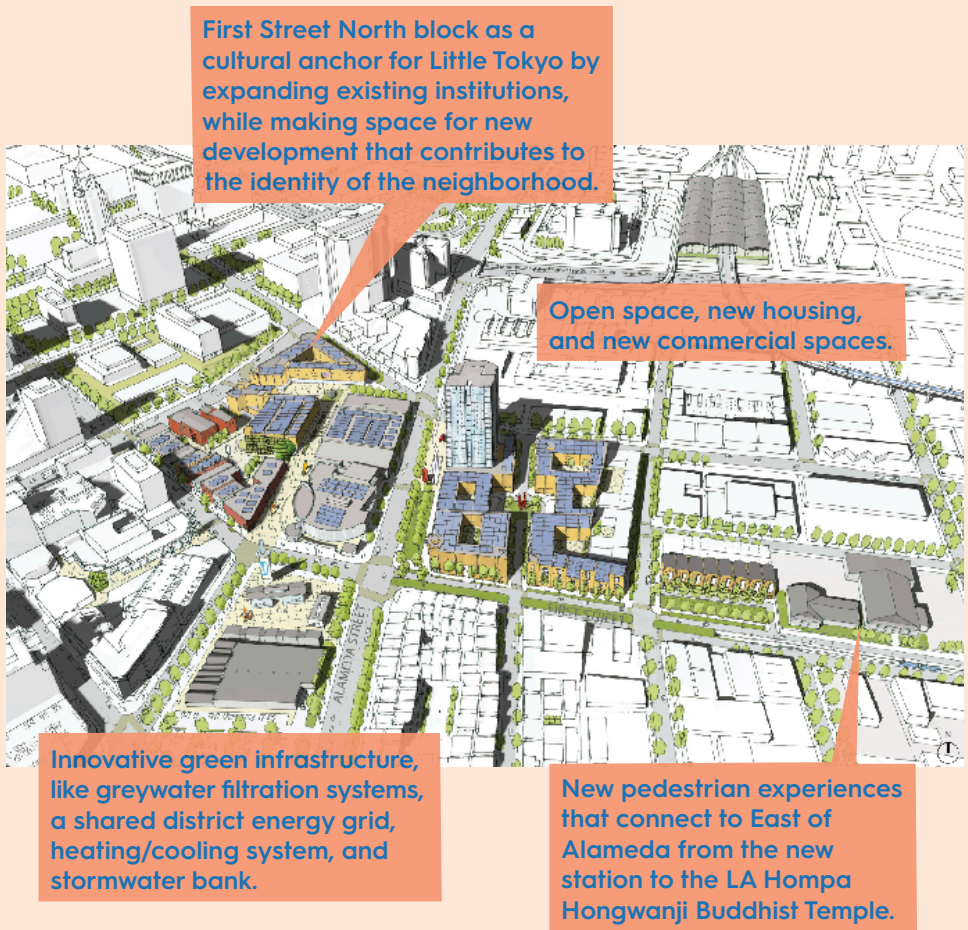
Lack of New Affordable Housing

The median household income in Little Tokyo is only \$15,441, but there is very little affordable housing.

SLT's Long-Term Vision

In 2013, in response to plans for the Metro Regional Connector station as the second busiest transit hub in LA County, Sustainable Little Tokyo embarked on a community-based vision process to design a scheme for First Street North (the block between Temple St, 1st St, Judge Aiso St, and Central Ave), the Mangrove block (First St and Alameda St), and suggestions for the Metro station site (First St and Central Ave). Over 200 community members created the Sustainable Little Tokyo 2013 vision for equitable and sustainable development of these three pieces of public, city-owned land.

The community vision includes:



The proposed development is a phased 5-10 year plan, ensuring the long-term sustainable development of the neighborhood. Building upon this vision, SLT 2020 aims at short-term actions that continue community efforts for self-determination and sustainability in order to build towards this long-term vision. The long-term SLT 2013 vision can be found at: www.sustainablelittletokyo.org

SLT 2020: A Strategy

SLT2020 is a community-driven action plan to provide a short-term strategic vision for the equitable cultural development of the neighborhood by 2020.

For six months in 2017, we asked community leaders and advocates, residents, seniors, small businesses, and visitors what they would like to see in Little Tokyo by the year 2020. Using engagement tools such as arts-based model making, mapping, street-side inquiries, and door-to-door surveys, we had over 230 people share their visions for the neighborhood. By 2020, we would like to celebrate the vibrant history of Little Tokyo while continuing to fight for the self-determination and equitable development of the neighborhood that serves the people of this community.



Guiding Principles

The Community Vision is guided by collective principles:



Strong Community Fabric that:

- is intergenerational and multi-cultural.
- strengthens and celebrates the identity and history of Little Tokyo.



Mottainai/Sustainability that:

- ensures green practices including recycling and limiting waste.
- promotes “Take off your shoes” practice and respect for existing rituals and practices.



Economic Vitality and Small Business Development that:

- complements, not replaces, existing small businesses.
- supports independent, non-chain retail and strengthens long-time businesses.



Complete, Balanced, Human Scale Development that:

- promotes projects and programs that allow the existing community to thrive.
- ensures affordable and low income housing for all, including seniors.
- encourages appropriate density that maintains the character and feel of Little Tokyo.

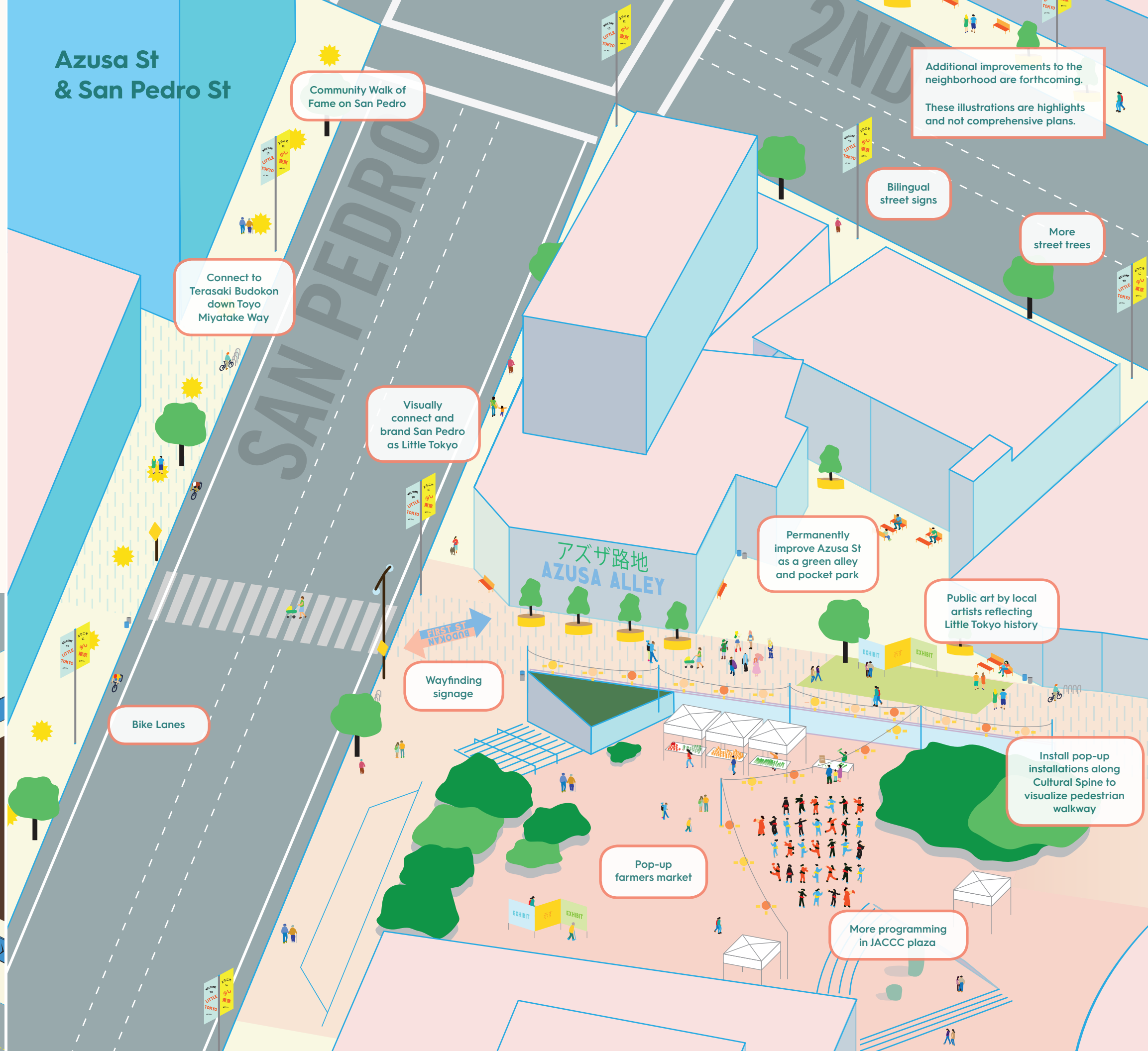
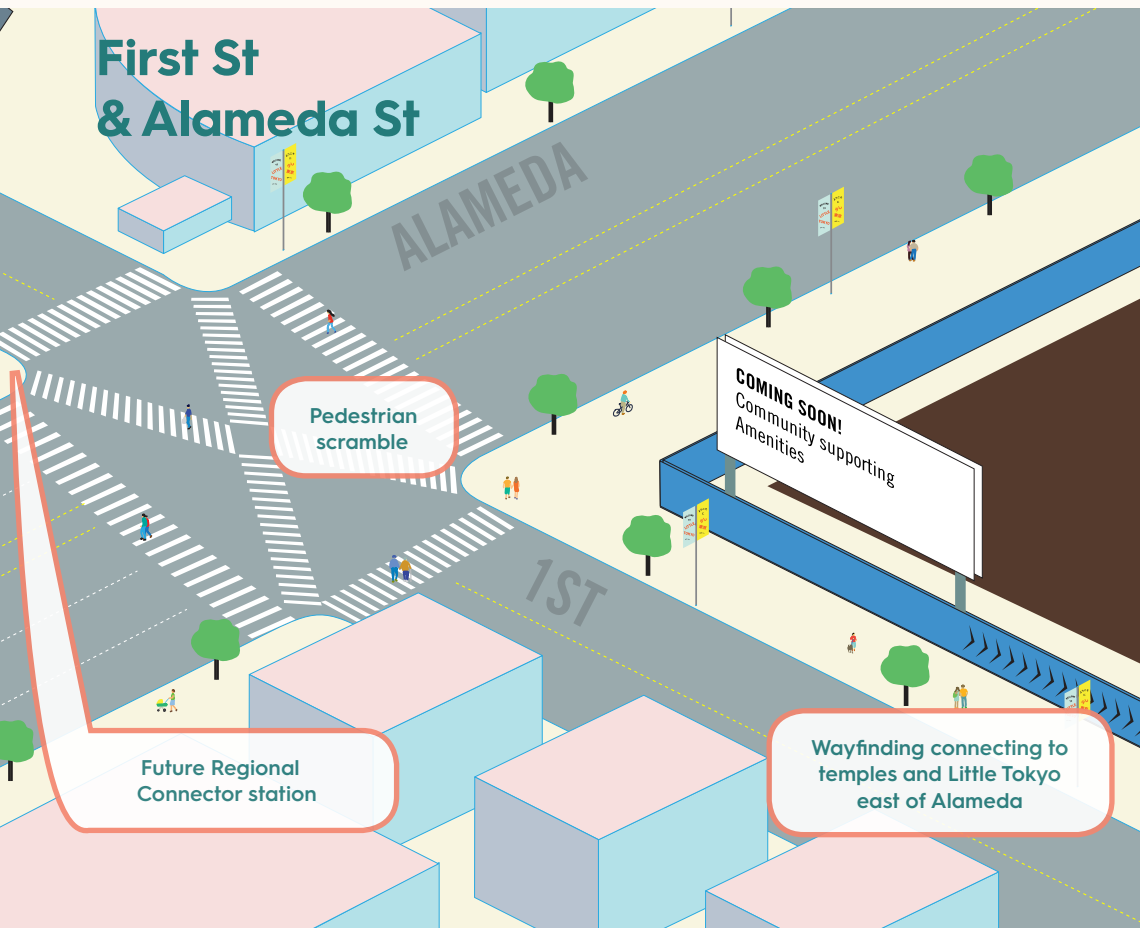


Mobility and Linkages that:

- ensures safety and multi-modal transportation for ages 5-85.
- foster connections to surrounding neighborhoods.
- creates pedestrian pathways that access all parts of the neighborhood.

PRIORITIES (from short term to long term)

- 1. Preserve existing cultural and spiritual institutions, including those without physical locations.
- 2. Maintain unique goods and identity of Little Tokyo.
- 3. Organize a farmers market with culturally relevant produce.
- 4. Connect Japanese Village Plaza to Weller Court and beyond to Los Angeles St.
- 5. Make San Pedro St, Central Ave, and Alameda St more reflective of Little Tokyo.
- 6. Create incubator spaces for community-supporting small businesses.
- 7. Develop more affordable housing for low-income residents, families, and artists.



2020 Vision and Action Plan

A list of potential projects our community would like to achieve by 2020. For a full list of community ideas, check out www.sustainablelittletokyo.org. Want to help make one of these happen? See the to do list!

Arts and Culture

to strengthen the identity of the neighborhood

- + More public art and murals to reflect history and provide more opportunities for local artists.
- + More programming connecting Japanese American history to contemporary issues.
- + Create more educational programs to preserve and celebrate cultural arts and history, such as cooking and crafts.

Small Business

to maintain unique goods and foods emblematic of Little Tokyo's identity

- + Continue to support existing small businesses.
- + No more corporate or chain retail businesses.
- + Rent support and mitigation for small businesses.
- + Create funds and resources to support renovations and improvements to existing businesses.
- + Full grocery store, laundromat, craft supply store, and movie theater.
- + Community land trust for temporary leases for commercial space.

Housing

to ensure affordable and secure housing for families and low-income residents

- + Develop low-income housing; no more market-rate housing.
- + Artists housing and live/work flex areas.
- + Joint development of Metro Regional Connector site with housing.
- + Educational and social programming for residents.
- + More support services for the homeless community.

Open Green Space

to increase high quality public spaces throughout neighborhood

- + Create park space with playground and exercise equipment for children and elders.
- + More street planters, planted shade, and fruit trees.
- + Install pocket parks and small green areas along street.
- + Plant vegetable gardens and urban farm spaces in open spaces and rooftops.
- + More public restrooms and trash cans.

Connectivity

to foster greater community and ease of travel within and to the area

- + Make Central Ave more reflective of Little Tokyo, especially at station site.
- + Close portions of First St for festivals.
- + Ensure pedestrian safety, bike access, and more off-street parking.
- + Culturally connect with other ethnic neighborhoods.
- + Connect East of Alameda with programming and pathways.
- + Fight the West Santa Ana train line on Alameda.
- + More affordable parking.



SLT 2020 To Do List!

Everyone can play a role in sustaining our community!
Check out this list of things you can do to help!

Short Term Visitor / Tourist

- Go Local! Shop at local community-supporting businesses and avoid chains, and corporate stores and restaurants.
- Support legacy small businesses with word-of-mouth advertising, positive Yelp reviews, and social media check-ins and tagging.
- Attend cultural events and festivals. Check out www.SustainableLittleTokyo.org and www.GoLittleTokyo.com for more.

Supporter

- See a project you want to help with or have your own idea? Attend or host an organizing meeting with Sustainable Little Tokyo and Little Tokyo Community Council! Bring your friends.
- Enroll your children in youth leadership programs with Little Tokyo Service Center, Kizuna, and Rising Stars.
- Volunteer at community events and organizations!
- Encourage your friends and neighbors to get involved!
- Support affordable housing and tenants' rights! Get involved with Little Tokyo Service Center and register to vote!
- Produce new artwork in Little Tokyo! Get involved with SLT art projects!

Small Business Owner

- Join the Little Tokyo Community Council (www.littletokyoLA.org).
- Get small business support from Little Tokyo Service Center(www.ltsc.org).
- Attend community events and get to know your neighbors.
- Advertise Little Tokyo events and posters.
- Support local gardeners and farmers markets.
- Join the Little Tokyo Business Association (www.visitlittletokyo.com).

Resident

- Suggest changes to your neighborhood at the next Little Tokyo Community Council meeting.
- See the Visitor's to do list and check off all those actions!
- Support long-standing family-owned businesses.
- Get in touch with your local elected officials to support community changes!
- Practice everyday mottainai/sustainability, and support district-wide sustainability initiatives.
- Register to vote.
- Help organize community events in housing and in public spaces.

About Sustainable Little Tokyo

Sustainable Little Tokyo (SLT) is a community-driven initiative working to ensure a healthy, equitable, and culturally rich Little Tokyo for generations to come. Led by the Little Tokyo Community Council (LTCC), Little Tokyo Service Center (LTSC), and the Japanese American Cultural & Community Center (JACCC), Sustainable Little Tokyo began in 2013 as a multi-day community vision effort and has evolved into a holistic, neighborhood-wide campaign to promote the environmental, economic, and cultural sustainability of Little Tokyo.

SUPPORT FOR SLT2020 PROVIDED BY:
Global Green USA
ArtPlace America
Surdna Foundation



www.SustainableLittleTokyo.org sustainable@LittleTokyoLA.org
(213) 628-2725, ext.107 • 244 S. San Pedro Street, Los Angeles, CA 90012